

Yours Ever, Jane

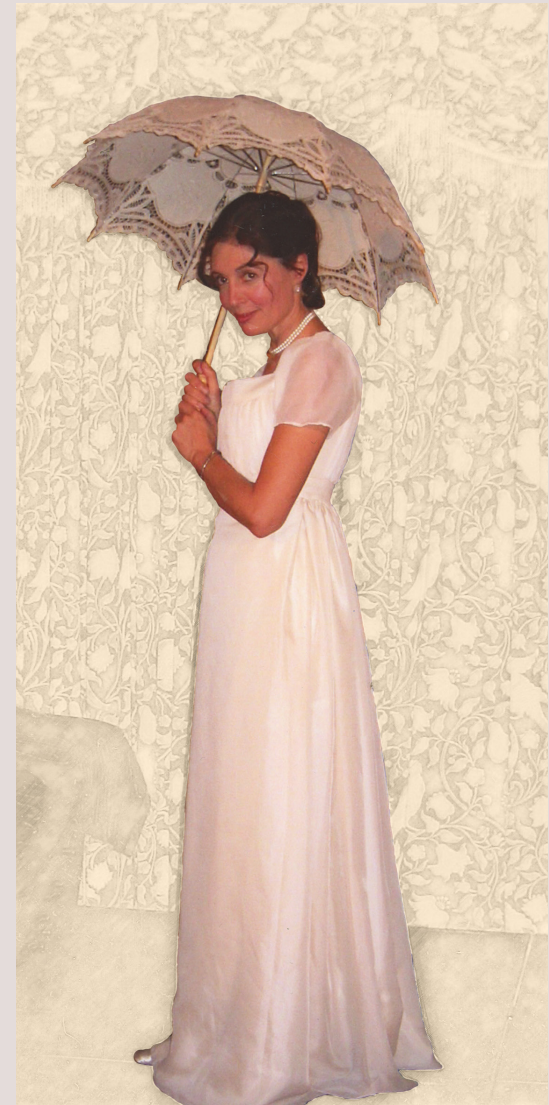
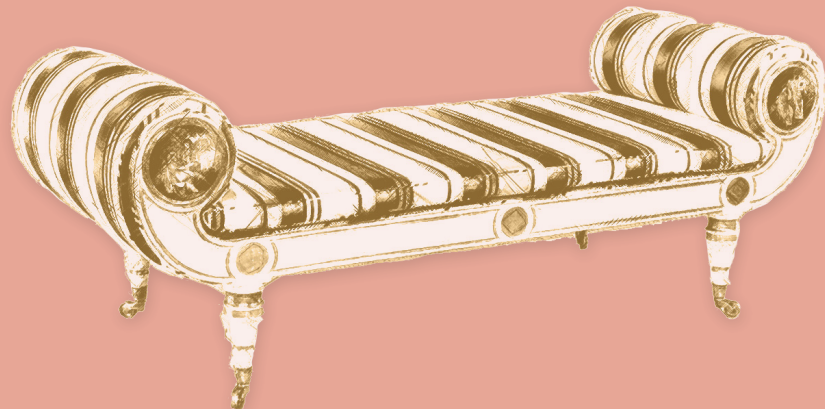
Pride, Prejudice, Manners & Marriage

Devised & performed by

Sarah Finch

Music by

Tamsin Lewis





About the show

A witty look at Regency
England through the letters
and novels of Jane Austen.

Jane Austen wrote long and descriptive letters to her beloved sister, Cassandra, with whom she shared everything. Sarah Finch portrays Jane and a host of her characters in many episodes you will remember – and some you may have yet to discover.

Through words, music and dance, *Yours Ever, Jane* weaves a dramatic tapestry as we discover Jane's sense of fun and her obsession with anonymity. Her sharp observations give an insight into the life of her times and the delightful music evokes the elegance of the period.

Yours Ever, Jane was devised and developed by Sarah Finch, coming out of her fascination with Jane Austen after playing her in the BBC adaptation of Fay Weldon's *Letters to Alice*. The music used in the performance is all played live on piano, violin and harp. This show has travelled widely, as far as New York, Los Angeles, Canada and Cuba.

Jane Austen at Prescott Shakespeare Festival (Ontario, Canada)

"The performance by Sarah Finch was outstanding, with both shows receiving standing ovations" Artistic Director Ian Farthing.

"Yours Ever, Jane is a wonderful evocation of the works of Jane Austen and the elegance of Regency England. I have booked this show three times, and on all occasions, audiences have thoroughly enjoyed it. Sarah and Tamsin are a pleasure to work with."
Steve Scott: Artistic Director Grove Theatre, Eastbourne.

"A splendid evening which has left our members crying out for more... such a pleasure."

"With a few well-chosen props, a striking costume and excellent acting, Sarah Finch brought Jane Austen to life."

"The breeding of a Royal Shakespeare-trained actress with a cut glass voice... so deft and hilarious she got a standing ovation. It's superb."

"The show was beautiful: elegantly presented with charming music."

"What a fantastic production! Sarah Finch was incredible, the music perfect, it surpassed my expectations. She was so entertaining, portraying the various characters, her charm, an ability to draw the audience in – it was splendid."

the Lions part

Cast biographies



Photo: ©Peter Kenny

Sarah Finch (Jane)

Sarah played Jane Austen for the BBC adaptation of Fay Weldon's book 'Letters to Alice' which was filmed in Jane Austen's house in Chawton, Hampshire. Her theatre work includes a year with the RSC where plays included A Midsummer Night's Dream, The Winter's Tale, All's Well that Ends Well, Peter Pan and Poppy. Sarah has also played Juliet in Romeo and Juliet (Oxford), the Little Prince in Exuperey's Little Prince (London and Paris). She has been in the West End in Pirandello's Henry IV with Richard Harris and Lilies on the Land, of which she was

one of the devisors. Film work includes Disgraceful Conduct, Guby Gubit, Uncage the Lion, Imbroglia, Man Dancin and C.S.Lewis: Dreamer of Narnia (Walt Disney Pictures). Television includes: Campion, The Pickwick Papers, Scandalous Women (BBC); Catherine Cookson's The Gambling Man, Lytton's Diary, Second Sight (ITV); Play in a Week (Channel 4), & Ten Days to Victory as Clara Petacci. Radio includes Faust and The King Must Die. Sarah is also a founder member of the Lions part theatre company.

the Lions part





Tamsin Lewis

(music)

Tamsin studied violin at the Florence Conservatoire and read Classics & Italian at Oxford. As a historical music consultant for film and television, her recent work includes projects with Lucy Worsley, Gareth Malone, Danny Dyer, and on Deborah Harkness' *Discovery of Witches*. Tamsin has written, arranged, directed and played music for a number of theatre productions at venues including Shakespeare's Globe, the Rose Theatre and Hampton Court, and has collaborated with theatre and dance historians and practitioners to reconstruct masques and other court entertainments for Historic Royal Palaces. Tamsin directs the

early music ensemble Passamezzo and has written a number of books on early modern music and society for Rondo Publishing. Like Sarah, Tamsin is a member of the Lions part theatre company, and has provided music for many of their productions. She also appears in their Globe-based festivals as a violin-playing bear.

While working on *Yours Ever, Jane* with Sarah, Tamsin visited Jane Austen's house (where Sarah filmed) and was able to play from Jane's own music books on the square piano there. Some of these pieces can be heard in the play.



REFEREES

Kali Peacock:
Artistic Director of UnderWired Productions
kali.underwired@gmail.com

Steve Scott:
Artistic Director of the Grove Theatre,
Eastbourne
grovetheatreastbourne@gmail.com

Technical information

This show is performed by 2 socially distanced performers, who travel in an electric car!

The show is about an hour and a half, including an interval – but in the current COVID crisis a one-act version has been created, which lasts just an hour. Either version can be booked. The show is very flexible and can be tailored to requirements. The company always abides by government advice.

A (tuned!) piano, would be great; if not the company can bring a keyboard but will need a sturdy 1.2-1.5m table to put it on.

Stage area:

needed 4 m square minimum.

Lighting:

A neutral, warm lighting state throughout, no changes.

Sound:

No sound support or amplification necessary, all music is performed live.



Get-in:

Please allow 2 hours before the audience comes in for the performance for the company to get in & set up.

- 2 or 3 smallish tables (antique looking if possible)
- 3 chairs (antique looking if possible)

NB: These are not an obstacle to booking, the Company is very flexible & happy to discuss – We can also dress up utilitarian furniture with drapes if necessary.

Audience set up:

Yours Ever, Jane works well end-on, with the audience on 3 sides or in cabaret style, it has also been performed outside.

For Prices and booking contact:

E-mail: janeausten.thelionspart@gmail.com
Website: www.thelionspart.co.uk



the Lions part